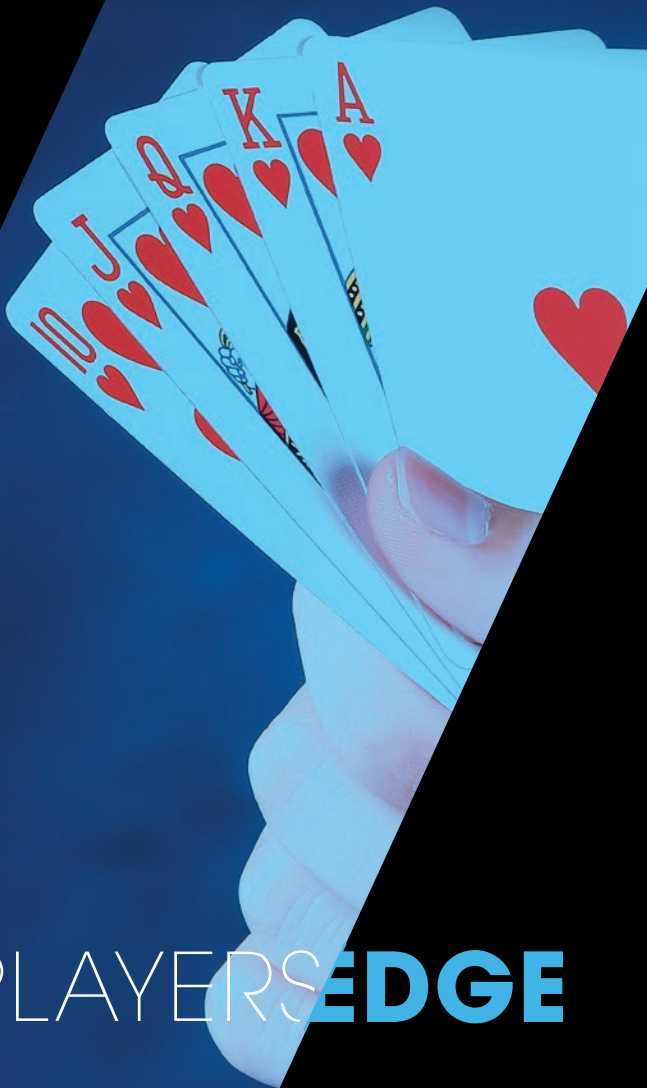


# HOW TO PLAY I LUV SUITS POKER

YOUR GUIDE TO PLAYING  
CASINO TABLE GAMES



PLAYERS **EDGE**

# PLAYING THE GAME

The Object of I Luv Suits Poker™ is to get a flush with more cards than the dealer. I Luv Suits Poker also offers the optional Flush Rush and Super Flush Rush Bonus wagers.

## Getting Started

You make the ante wager to begin play. You may also make the Flush Rush and Super Flush Rush Bonus wagers. The dealer will give a packet of 7 cards to each participating player and to themselves. After seeing your cards, you will have the option to either fold or make the play wager based on the amount of cards in your flush:

- If your hand contains a three or four-card flush, you may only bet 1x your ante.
- If your hand contains a five-card flush, you may bet 1x or 2x your ante.
- If your hand contains a six-card flush or higher, you may bet 1x, 2x or 3x your ante.

## Winning and Losing

Once all player decisions have been made the dealer will reveal their cards. The dealer's hand must contain a three-card 9-high flush or better to qualify. If the dealer's hand does not qualify, your play bet will be returned and your ante bet will be paid 1-to-1. If your hand wins, the ante and play bets pay 1 to 1. If the dealer beats your hand, the ante and play bets lose. If the dealer ties your hand, the ante and play bets both push.

## Flush Rush Bonus

The Flush Rush wins if you have a four-card flush or higher. The more cards in your flush, the more you win. See payable for odds.

## Super Flush Rush Bonus

The Super Flush Rush payouts are based on making the longest straight flush hand, starting at a three-card straight flush or higher. See payable for odds.

Must be at least 21 years old to play Slots, Table Games or to receive Seminole Wild Card benefits. Must be 18 or older to play Bingo and Live Poker. Persons who have been trespassed or banned by the Seminole Tribe of Florida or those who have opted into the self-exclusion program are not eligible. If you or someone you know has a gambling problem, please call 1.888.ADMIT.IT.



HOLLYWOOD, FL

PLAYERS'EDGE